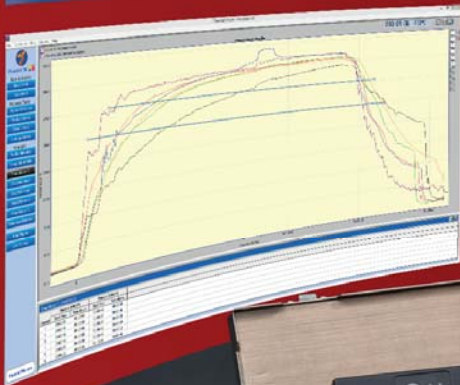
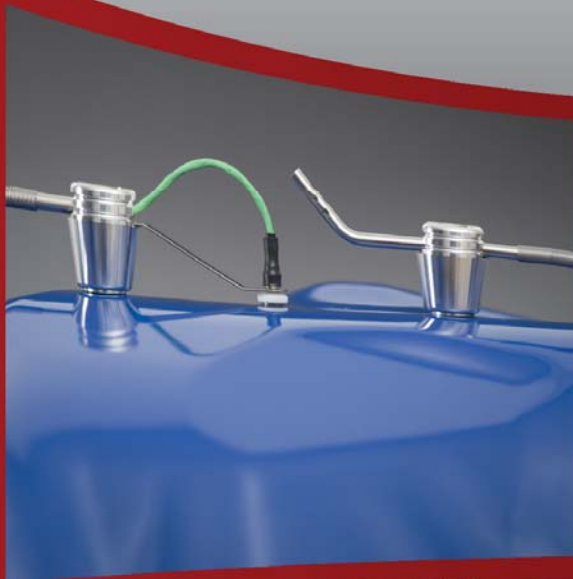




**Phoenix<sup>TM</sup>**  
Phoenix Temperature Measurement

# Compact System

Temperature Profiling For Curing Ovens



*...where experience counts!*

# Compact Systems

For paint and powder coating processes up to 300°C

The Compact Finishing System is designed to travel through the curing oven measuring actual product temperatures, providing a low cost durable profiling solution. The system uses a data logger, protected by a thermal barrier, to record the temperature of product as it passes through the oven. Information obtained can then be used to optimise the process.

## Data Logger

Combining rugged reliability, accuracy and ease of use, the Phoenix<sup>TM</sup> Compact data logger is designed specifically for use in curing applications. Protected by a robust aluminium case the data logger design includes cold junction compensation and an over temperature cut off to ensure the accuracy of data recorded. Supplied as standard with a calibration certificate traceable to national standards and with the option to certificate to UKAS (UK) or DAkkS (Germany).

Type	PTM1-006C
No. of channels	6
Thermocouple type	K
Measurement range	0°C to +500°C
Accuracy	+/- 0.3°C
Resolution	0.1°C
Max operating temperature	80°C
Battery type	2 x Standard Alkaline (AA)
Sampling rate	adjustable from 0.5 second to 1 hour
Memory	440.000 data points, non-volatile memory
Start trigger	time, temperature, start button or software
Dimensions	20 x 70 x 200mm (h x w x l)



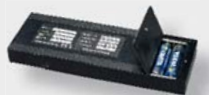
Realtime measurement while connected to a PC via USB for batch oven profiling



Robust housing for reliable use in harsh industrial environment



up to 400 hours measurement time





## TS04 thermal barriers

Featuring robust aluminium case, microporous insulation, phase change heatsink and 100% silicone free construction, the TS04 thermal barrier range offers ease of handling and high performance.



Standard TS04 range performance

Type	TS04-90-1	TS04-113-3
100°C /h	2.0	7.5
150°C /h	1.4	3.5
200°C /h	1.0	2.2
250°C /h	0.8	1.6
Height	90mm	113mm
Width	161mm	161mm
Length	312mm	320mm

Magnetic plate for thermocouple storage and efficient transfer to the product.



Heat sinks with very high thermal capacity and gas tight seals.



Need a thermal barrier to suit your application? Tell us your requirements and if it's possible we'll design and manufacture it for you! We are constantly developing and looking forward to any new challenge.

Dual thermocouple exits to reduce wear and increase thermal barrier life with silicone free construction.



## Thermocouples

All Phoenix<sup>TM</sup> finishing thermocouples are manufactured using the highest quality materials and conform to ANSI 96.1 special limits specification.

The thermocouples are designed to withstand rough handling and uniquely include **user replaceable sensors to minimize long term running costs.**

Available as magnetic, clamp or exposed junction, the thermocouples are PTFE insulated, triple wrapped with stainless steel braid, and have a final overall PTFE insulation.

Magnetic surface and air thermocouples



Clamp surface and air thermocouples



# Thermal View

The easy way to get a perfect result!



**PhoenixTM**  
Phoenix Temperature Measurement

PhoenixTM Thermal View software has all the essential functions required to understand and optimise your process.

All results are saved in a database for easy access which can be organized in a logical manner using the multi column sorting facility.

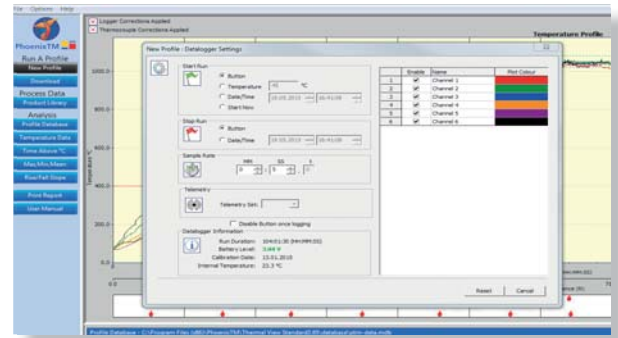
Simplicity: Screen layout is clear, concise and intuitive making the software user friendly, uncluttered and easy to use without compromise to the analysis detail available.

Clarity: Single screen layout provides graphical representation for the process with instant access to analysis options and results.

## PhoenixTM software has all the essential functions you require to keep your process under control:

- Temperature Data
- Multiple Time Above temperature analysis
- Multiple Maximum, Minimum and Mean temperature analysis options
- Multiple rates of change of temperature analysis
- Reference Profile to compare results for two different profiles
- On Screen Notes (time, temperature, slope and text)
- Printed reports
- Thermocouple location library
- Data import and export
- Oven start and stop positioning
- Logger real time measurement option when connected to a pc via USB
- PhoenixTM Mobile app support – download reset logger via android device\*
- Same site logger license allows multiple users without the need to buy additional software licenses.

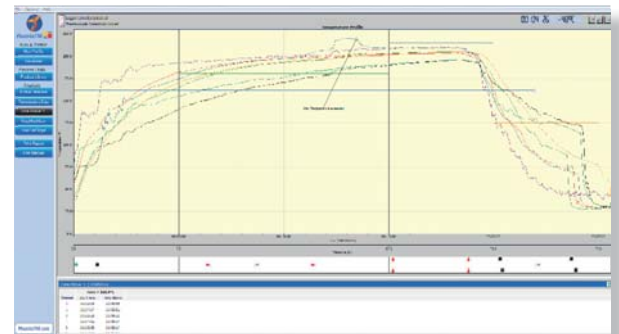
\*subject to device compatibility



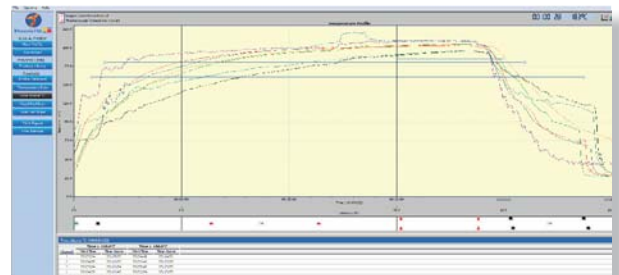
Simply enter:

- How to start the data logger
- The rate at which data is to be collected
- The number of thermocouples to be used.

For regular measurements these can be set with one mouse click or pressing the data logger start button.



On screen notes allow for sharing of process information and the highlighting of specific process conditions



Multiple time above temperature, rates of change of temperature and maximum temperature analysis options for verification of the cure quality and optimisation of the process

PhoenixTM Ltd  
25 Earith Business Park  
Meadow Drove,  
Earith, Cambridgeshire  
PE28 3QF, UK  
Tel.: +44 1353 223100



[www.Phoenixtm.com](http://www.Phoenixtm.com)  
[sales@phoenixtm.com](mailto:sales@phoenixtm.com)