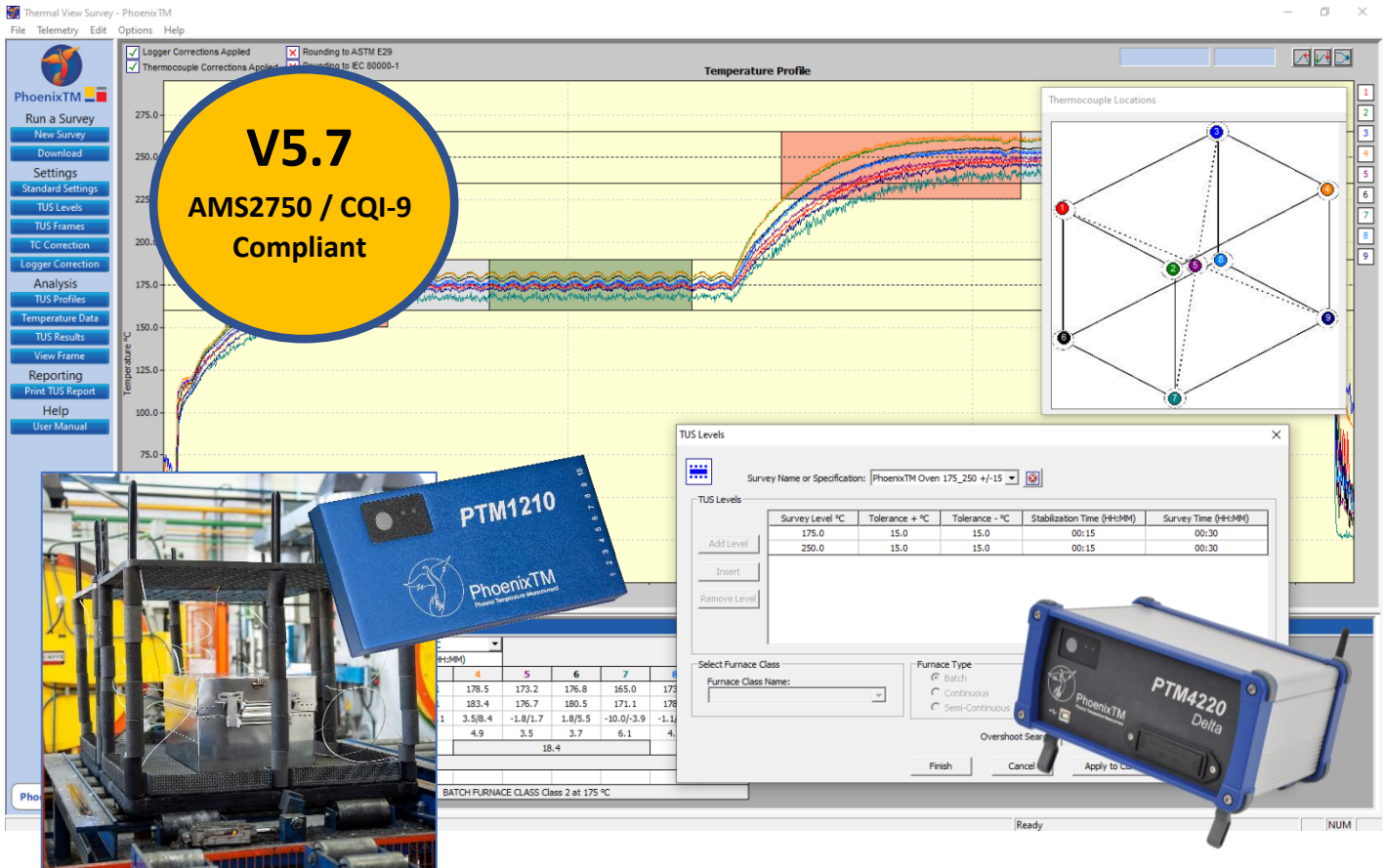




PhoenixTM
Phoenix Temperature Measurement

Where experience counts!



Thermal View Survey Analysis Software

PhoenixTM 'Thermal View Survey' is a powerful software package for recording and analysing TUS data from your furnace and oven surveys. The software is compatible with the complete PhoenixTM data logger range. Whether performing the TUS thru-process employing the travelling PTM1200 data logger protected within the appropriate thermal barrier for semi-continuous or continuous heat treat processes or stand-alone PTM4200 data logger for batch furnaces the software allows complete data logger set-up, real time data monitoring and full TUS analysis and reporting. The software has been developed to comply with all the necessary analysis and reporting requirements of AMS2750 or CQI-9 TUS pyrometry standards. Fully traceable and certified TUS reports can be easily and efficiently generated saving production time and freeing up your technical staff.

Remote Data Logger Control & Monitoring

Wireless (Bluetooth and RF*) set-up and control of data logger and live monitoring of data against TUS tolerances at each sequential TUS temperature level. Collect TUS data with confidence and efficiency that you know will comply.

Efficient Quick TUS Parameter Set-up

Create template files for key TUS parameters including TUS frame set-up, TUS tolerance levels and data logger and thermocouple correction factor files allowing error free quick routine TUS operation without repeat manual parameter set-up.

Accurate Analysis and Compliant Reporting

Customised TUS analysis tools to accurately analyse survey data, reported with compliant 0.1 °C & 0.1 °F readability, with automatically applied correction factors. Report generator tool allows configuration of TUS report to comply fully with AMS2750 or CQI-9. New report template to allow accurate quick completion of different periodic TUS reports.

* Option with data logger

www.phoenixtm.com

Software Power

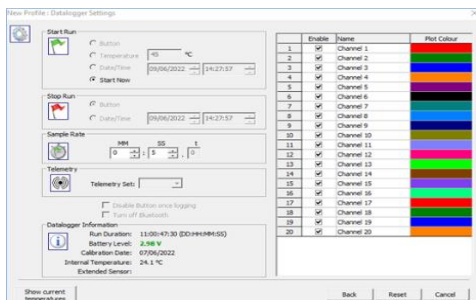
- Full data logger reset and control
- Real time analysis either via USB cable, Bluetooth, or optional RF Telemetry
- TUS with up to 60 thermocouples (Merging 3 x 20 channel TUS runs)
- Temperature data resolution to 0.1 °C & 0.1 °F
- Data logger and Thermocouple correction factor files accurately generated across entire measurement range
- Correction Factors applied automatically to complete TUS data.
- Full TUS analysis reporting at each TUS level to meet AMS2750
- Recovery & Lag Time analysis feature
- Full temperature data at TUS levels with pass/fail colour coding
- Full zoom control of graphical data
- Temperature overshoot warnings
- TUS temperature level library
- TUS zone fitting to temperature data (Rising and Falling TUS)
- TUS frame library & on-screen view
- Furnace class result at each level (Method Options)
- Rounding Up/Down to ASTM E29 and IEC 80000-1
- On screen notes
- User customised printed report designed to meet all ASM2750 requirements
- Full correction factor reporting for Data logger and Thermocouples to AMS2750
- Export to CSV file
- Import Furnace Control TC data
- On screen help
- Database storage
- Password protection
- Audit trail
- TUS Report Template Files

www.phoenixtm.de

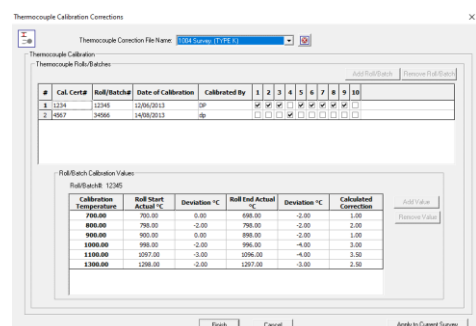


Key Screens & Functions

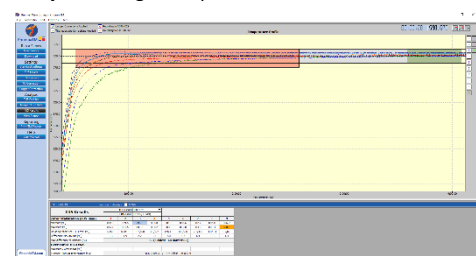
Key Features of the Thermal View Survey Software providing an accurate, quick and efficient TUS reporting facility.



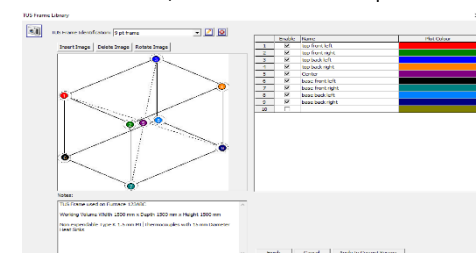
Full Data Logger Status, Set-up and Control (including TUS sample interval, channel configuration)



Thermocouple calibration files allowing accurate set-up of TC correction factors across entire temperature range. Not just at single temperature.

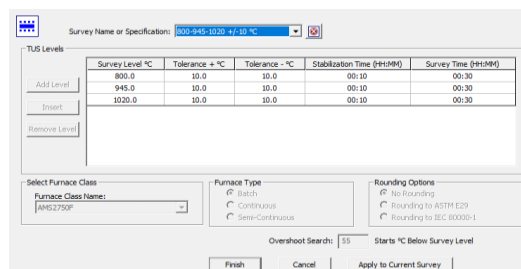


Full graphical and analysis reporting of TUS levels showing full overshoot search, stabilise and TUS time phases.

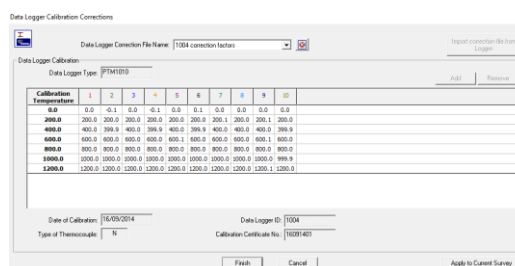


TUS frame Library files allowing clear documentation of TUS thermocouple location on TUS frame within furnace working volume.

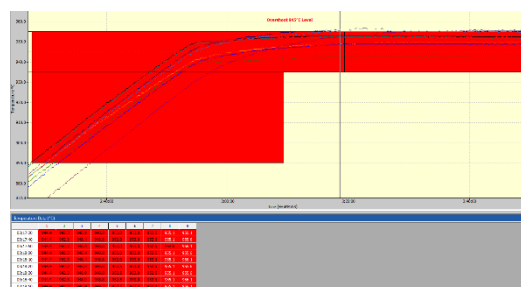
Note: All Products are continually improved, specifications may be changed without prior notice. Ref: PhoenixTM_Datasheet_SW25_10.8 UK 20250601



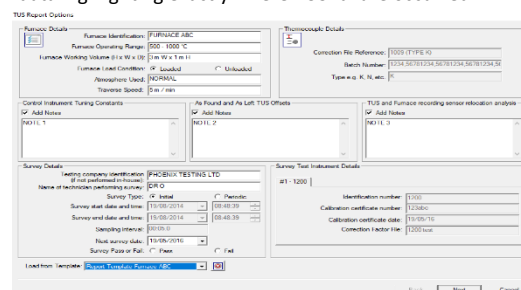
TUS level library files allowing comprehensive set-up of temperatures, times, rounding and furnace class settings.



Data logger correction file read directly from field test instrument permitting automatic TUS correction and certified documentation.



Clear reporting of overshoot errors both graphically and in raw data highlighting exactly where TUS failure occurred.



TUS report dialogue allowing customisable set-up of all information (auto and manual input) required for AMS2750 and CQI-9 report generation. Now with saved report template file feature.

Represented by:

www.phoenixtm.com

www.phoenixtm.de



PhoenixTM LLC. 4600 140th Avenue North,
Suite 180, Clearwater
FL 33762 USA
Tel: +1(727)608 4314 info@phoenixtm.com



PhoenixTM Ltd. 25 Earith Business Park
Meadow Drive, Earith, Cambridgeshire
PE28 3QF, UK
Tel: +44 (0) 1353 223100 sales@phoenixtm.com



PhoenixTM GmbH
Dehmer Str 48
32549 Bad Oeynhausen, Germany
Tel: +49 5731 300280 info@phoenixtm.de